



# Ramp Master Plan Information Session



Sunday 17 Sep 2017



# Agenda

- Welcome
- History and background
- Overview of final Ramp Master Plan
- Works completed
- Timelines and next steps
- Questions

# Building the Sea Wall

- Single ramp visible in the background (right)





## Building the 1<sup>st</sup> finger jetty

- Finger jetty being built alongside the original ramp
- Note surface of the lower parking area



## Adding the second ramp & finger jetty

- Second ramp added 1998-1999
- 2<sup>nd</sup> finger jetty built 2003 (far right)



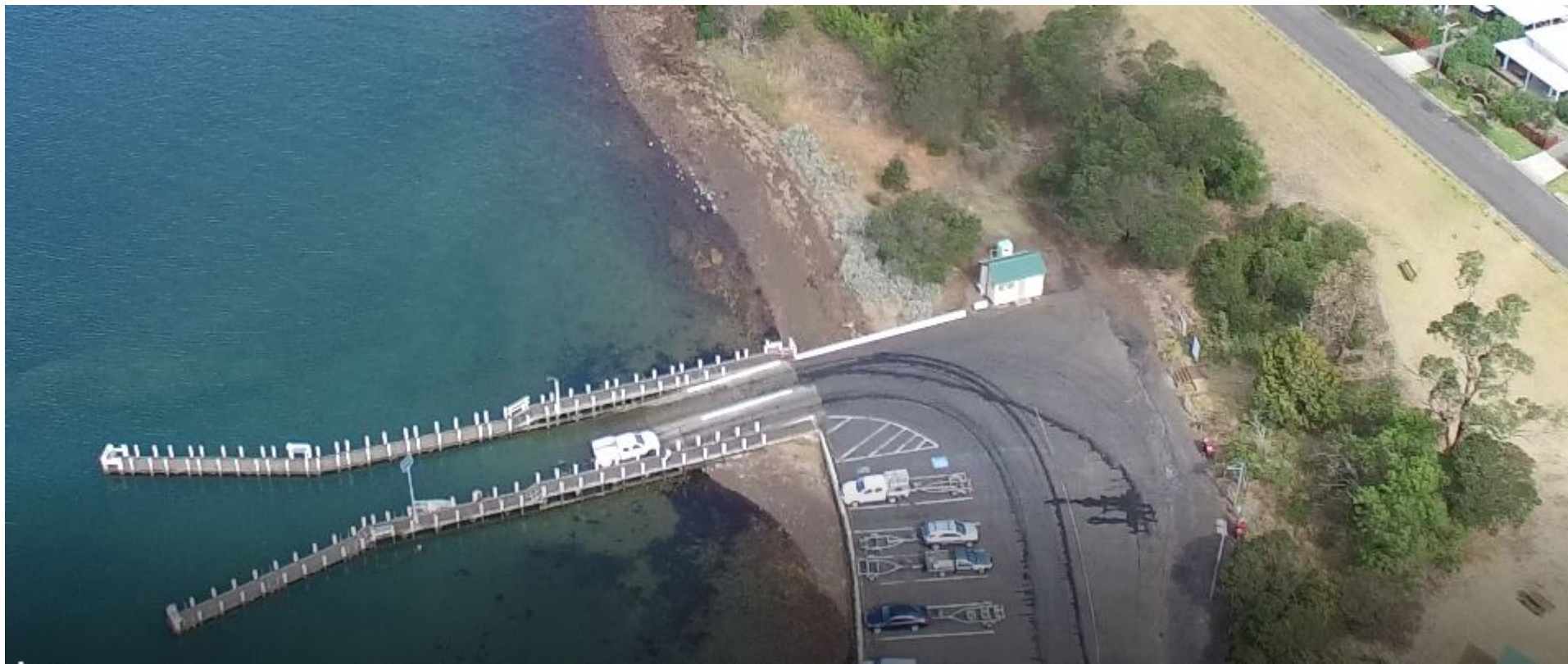




# Master Ramp Upgrade Background

- Letter from Corinella Boating & Angling Club in 2015 highlighted issues & concerns with the ramp facility
- Looked at other facilities such as Tooradin
- Successfully applied for funding for Ramp Master Plan
- Engaged Wayne Hill (Maritime Activity & Management Specialist) and Geoff Atkins (Maritime Engineer) to develop the Ramp Master Plan
- Community consultation session late August 2016 with some great feedback, suggestions and discussion
- Second consultation session May 2017
- Input sought from stakeholder groups (eg Coastguard, Water Police, Central Coastal Board, Parks Vic, Bass Coast Shire Council, Vic Fisheries Authority etc).
- Victorian Fisheries Authority have pledged \$100k through their Better Fishing Facilities fund

# Master Plan Update



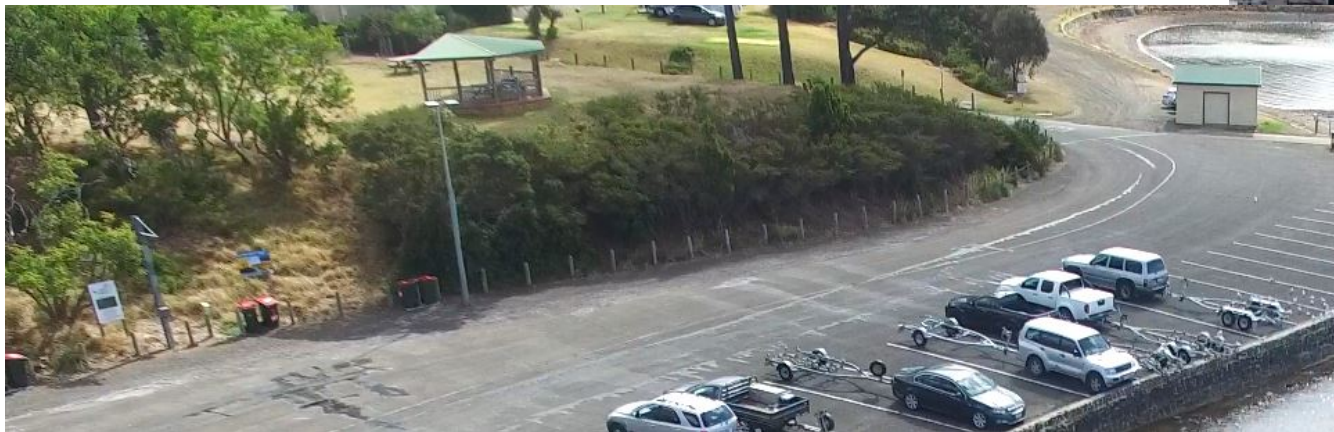
# Works completed

- Pedestrian access at Peters Street
- Cut corner at the lower car park exit point to create additional room for derigging
- Feedback that this should have been cut back further
- Walkthrough with Corinella Boating and Angling Club last weekend to agree on the best way forward
- Adjust road markings to allow wider exit path for cars with long trailers
- Monitor and if needed, will revisit the last sections of the corner retaining wall
- Final piece of work remaining is to move the lightpole, bins and fishing club gantry to a recess behind the retaining wall – in progress
- Starting to look at fish cleaning station options

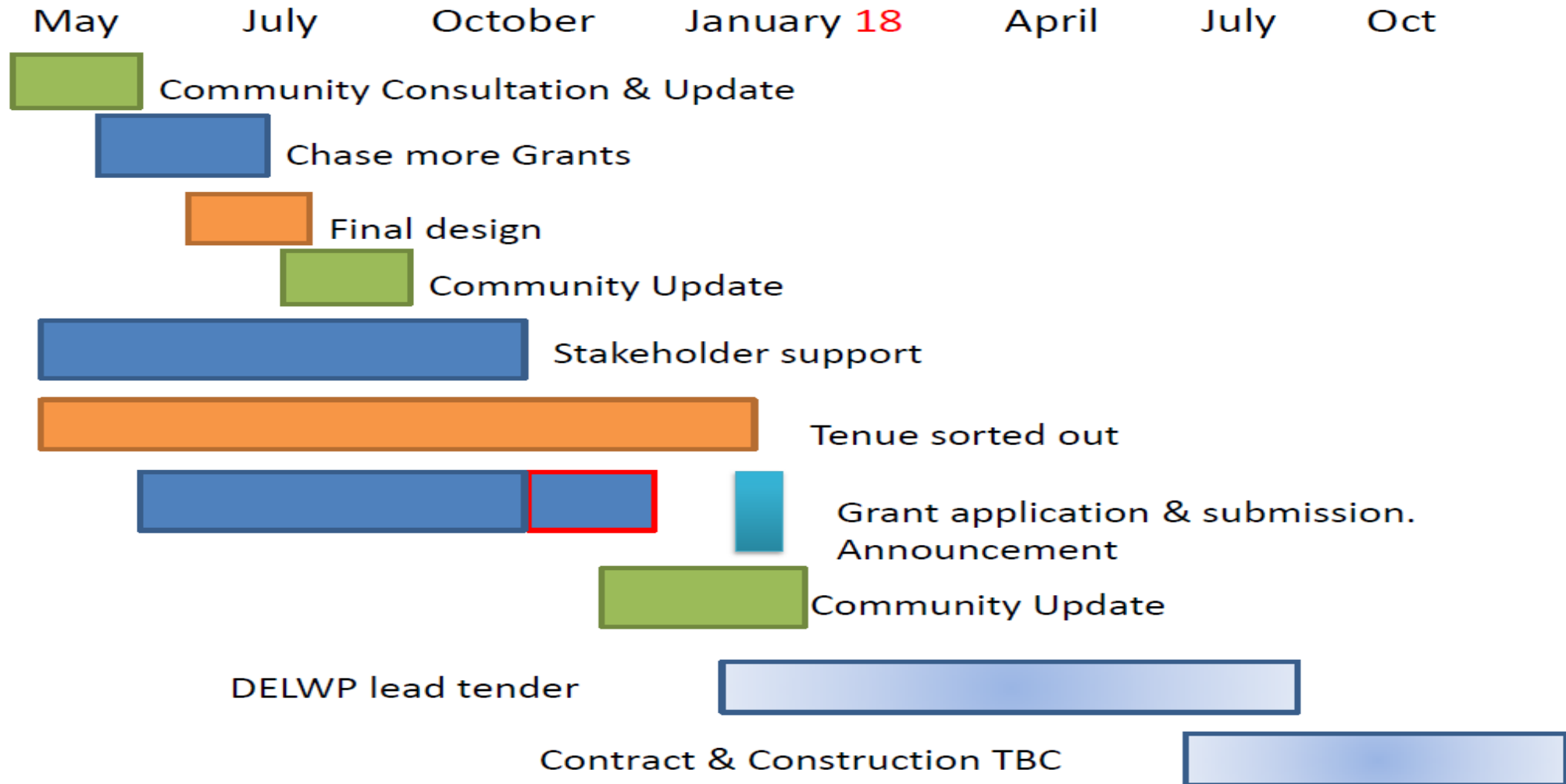




# Corner Cutback

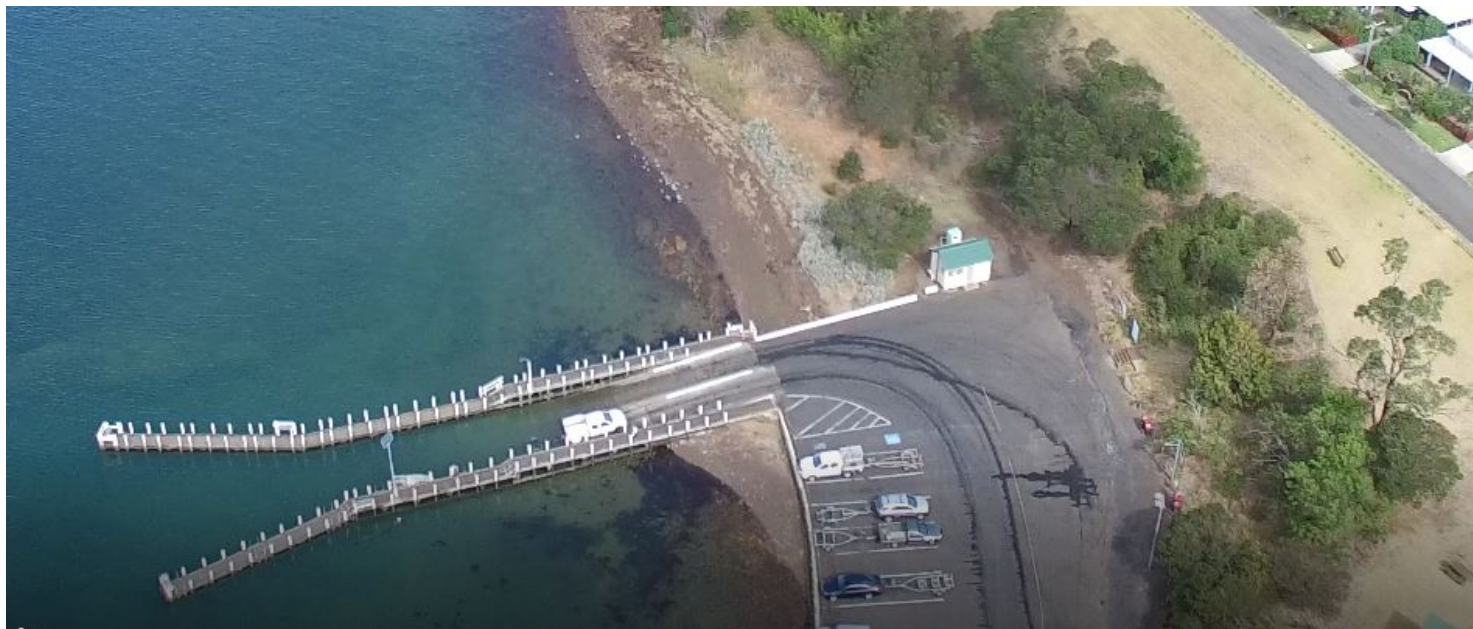


# Timelines and next steps





# Questions?



To keep up to date see [www.corinellaforeshore.com.au/rampupgrade](http://www.corinellaforeshore.com.au/rampupgrade)



# Appendices



## Example of floating jetty

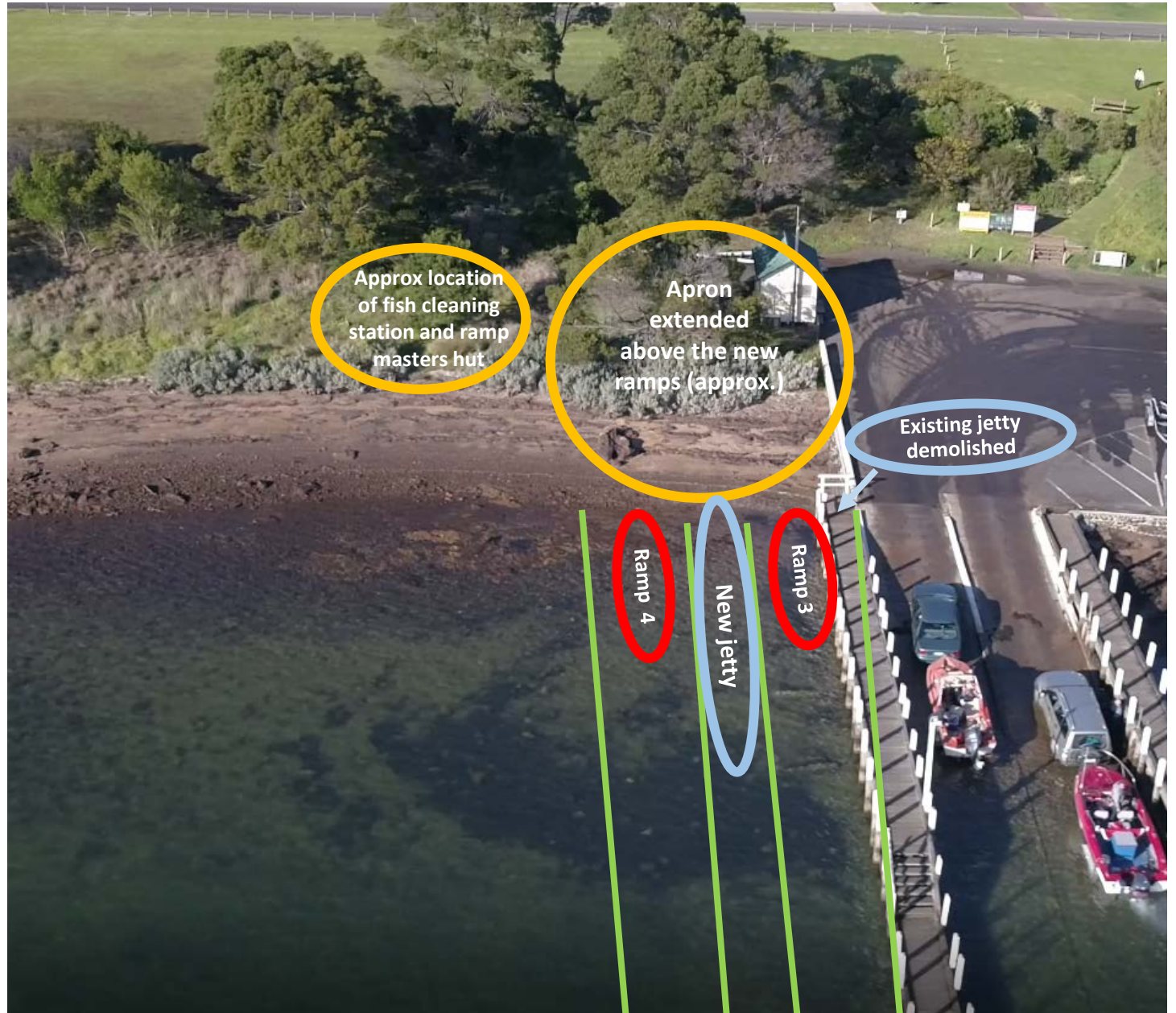
- Floating jetty at Warneet
- Central section is hinged to the fixed jetty and rises and falls with the floating section as the tide changes
- Railing aids mobility when tide is low





## Approx location of new ramps and facilities

- Ramp design and dredging lines from above
- Far right – viewed from the north towards the shore, location of fish cleaning station & ramp masters hut, along with widened backing apron







## Example of fish cleaning facilities

- Tooradin fish cleaning station – 2 stations
- Fresh water provided for cleaning





# Examples of Fish Cleaning Facilities

- Right – Crookhaven river NSW; Jervis Bay Marine Park (same style facilities)
- Bottom from left –  
Mallacoota, Portland,  
Torquay

